

# **First Alert<sup>®</sup>**

## **2074F / 2079F**

# **First Alert<sup>®</sup>**

MANUAL # M08-0272-000



[www.FirstAlert.com](http://www.FirstAlert.com)

## **DIGITAL ANTI-THEFT DRAWER SAFE**



MANUAL # M08-0272-000

## INDEX

Overview of Your Safe ..... 1-2  
 Initial Set Up ..... 3  
 Programming a Personal Passcode ..... 4-5  
 Shelf and Mounting ..... 5-6  
 Use, Care and Maintenance ..... 7  
 Consumer Affairs ..... 8-9  
 Safe Identification Record ..... 10  
 Limited Warranty ..... 11

## FOR YOUR PROTECTION

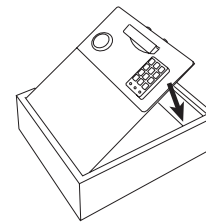
- ✓ Do not remove the serial number tag from the safe.
- ✓ Store emergency override keys away from safe, NEVER INSIDE.
- ✓ Record all safe identification numbers on Safe Identification Record (page 10).
- ✓ Save this manual and NEVER keep it inside the safe.

## OVERVIEW OF YOUR SAFE

### ***Congratulations!***

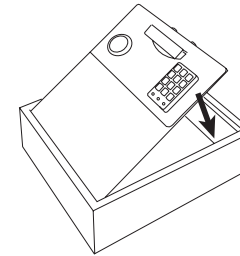
Your new First Alert® Anti-Theft Safe™ will provide secure protection for your valuables, important documents and other personal items. All First Alert® safes are designed and built using the highest manufacturing standards to ensure maximum user satisfaction under a variety of conditions. With proper care, your First Alert® safe will provide peace of mind for many years to come.

## PACKAGE CONTENTS



2074F

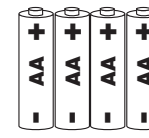
OR



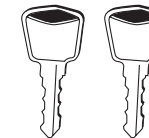
2079F



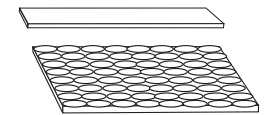
4 Mounting Screws



4 AA Batteries



1 Emergency Override Key



Shelf

## YOU WILL NEED



1 Small Phillips Head Screwdriver



1 Drill with 5/16 in. Bit



1 Pencil

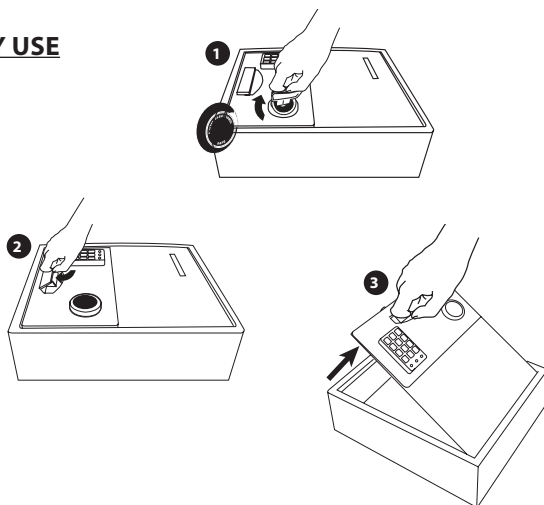
### **IMPORTANT: DO NOT RETURN SAFE TO STORE**

If you are missing parts, have difficulty programming your safe or have any other questions pertaining to its proper use and care, DO NOT RETURN your safe to the store. Please contact Consumer Affairs at **1-800-323-9005, 7:30 a.m. – 5 p.m.** Central Standard Time, Monday through Friday. To assist us in serving you, please have the model number and date of purchase available when calling.

## INITIAL SETUP

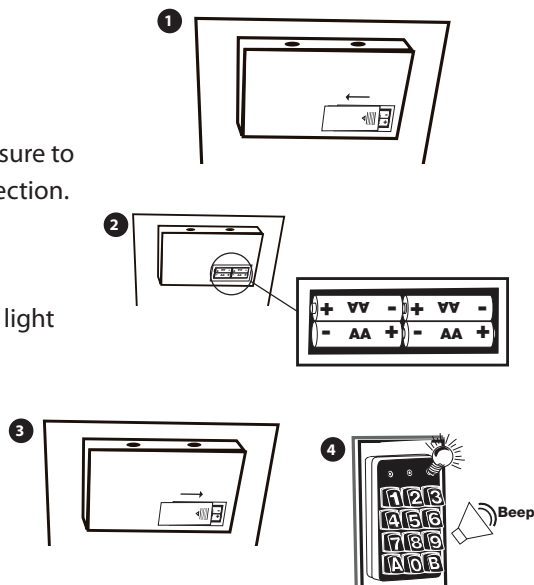
### EMERGENCY OVERRIDE KEY USE

- 1 Insert emergency override key into the key lock.
- 2 Turn it clockwise.
- 3 Pull the door open.



### BATTERY INSTALL

- 1 Remove battery cover.
- 2 Install four (4) AA batteries. Make sure to install them facing the proper direction.
- 3 Replace the battery cover.
- 4 When installed correctly, a yellow light will flash on the digital keypad.

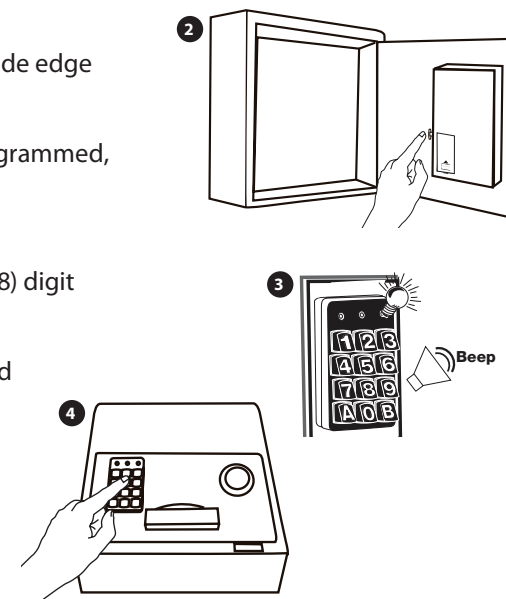


### IMPORTANT

Clean the battery contacts in the battery compartment and on the batteries before installing new batteries.

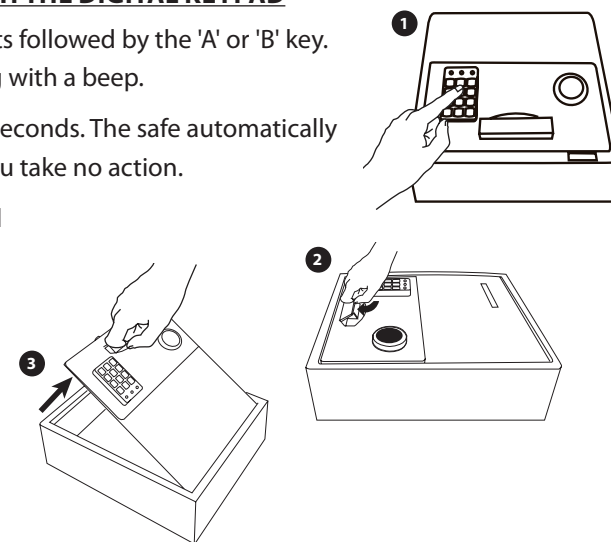
## PROGRAMMING A PERSONAL PASSCODE

- 1 Open the safe door.
- 2 Press the reset button on the inside edge of the door closest to the hinges.
- 3 When the safe is ready to be programmed, you will hear a beep and a light will flash on the keypad.
- 4 Enter your new three to eight (3-8) digit passcode followed by 'A' or 'B'.
- 5 The light will once again flash and you will hear a beep.



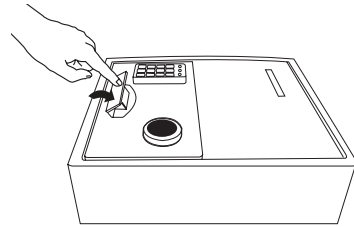
### OPENING YOUR SAFE WITH THE DIGITAL KEYPAD

- 1 Enter new code: 3-8 digits followed by the 'A' or 'B' key. Ready light flashes along with a beep.
- 2 Lift the handle within 5 seconds. The safe automatically relocks in 5 seconds if you take no action.
- 3 Hold the handle and pull the door open.



**CLOSING SAFE**

To lock the safe, press the handle down. If the handle is not fully closed, the safe will remain unlocked or will not re-open.

**SECURITY LOCKOUT PERIODS**

For added security, the safe will automatically lockout entry for 15 minutes after three attempts to open with an invalid passcode.

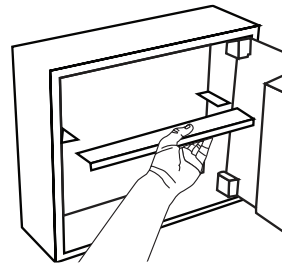
**IMPORTANT**

If your safe has an interior light, the switch is located inside the safe door.  
NOTE: The batteries will run down if you do not turn off the light.  
The light bulb is not user replaceable.

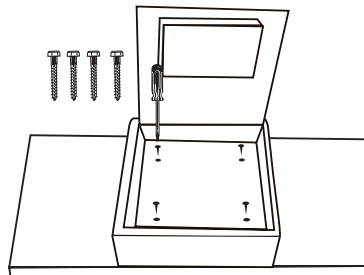
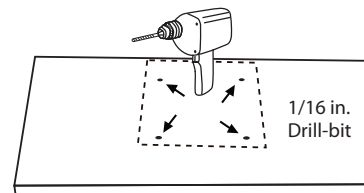
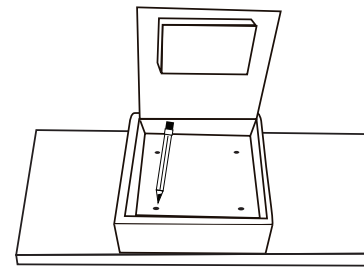
**SHELF AND MOUNTING****INSTALLING THE SHELF**

Slide shelf into place on top of shelf racks.

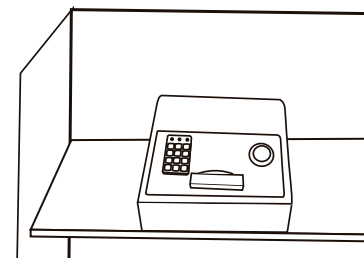
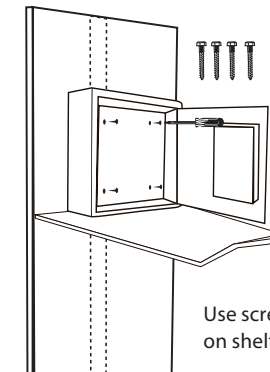
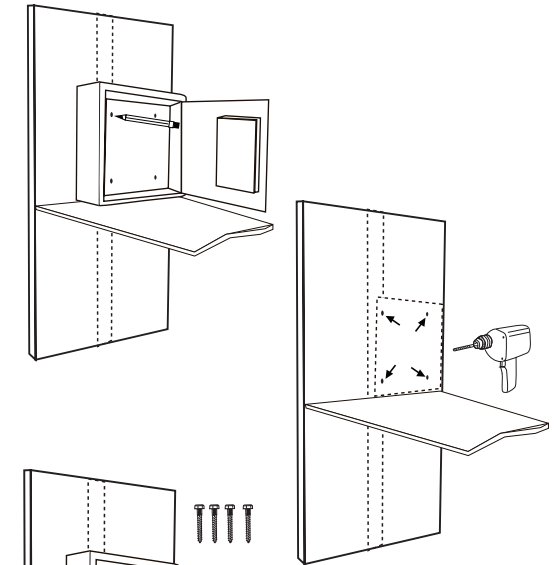
*Note: Place shelf in unit when wall mounting safe.*

**MOUNTING INSTRUCTIONS**

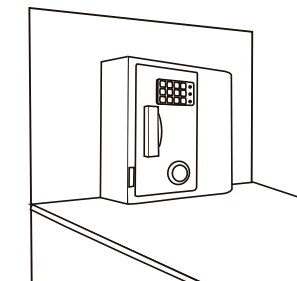
- 1 Place safe in desired location and use a pencil to make drill marks on the shelf.
- 2 Use the safe's predrilled holes as your guide.

**Shelf-top Mounting**

Use screwdriver to install unit on shelf (screws included).

**Wall Mounting**

Use screwdriver to install unit on shelf (screws included).



## USE, CARE AND MAINTENANCE

When properly maintained, your safe will continue to operate and accurately read the authorized passcode for many years. In order to ensure optimum performance of your safe, please follow these simple precautions:

### Battery Maintenance

- 1 Always purchase and use the batteries as specified by this User's manual.
- 2 Always replace **all** batteries at the same time. It is recommended to replace all batteries at least once a year or sooner depending on amount of use.
- 3 Always clean the battery contacts in the battery compartment and on the batteries before installing new batteries.
- 4 Always make sure all batteries match the polarity (+ and -) signs in the open battery compartment.
- 5 If your safe will not be used for an extended period of time, it is recommended that you remove the batteries.
- 6 Always promptly remove and properly discard of all used batteries.

**Replace Batteries** – For best results and performance, we recommend that the batteries be replaced at least once a year or sooner depending on amount of use.

**Clean Hands** - Never attempt to operate the digital keypad if your hands have excessive dirt, debris or liquids on them.

**Clean Safe** – To clean the surface of your safe, it is recommended that you use a mild cleaner (e.g., window cleaner) to avoid scratching or discoloring the surface. Always wipe dry and NEVER use abrasive cleansers on the safe or digital keypad

**Moisture** – We recommend that you place delicate items such as pictures or intricate jewelry into an air-tight container before storing them in your safe. Avoid placing your safe in areas of high humidity. For optimum performance, the safe should be opened and aired out for at least 20 minutes every two weeks.

For future reference, store this Operation and Installation Guide in a secure area away from the safe. DO NOT DISCARD!

## CONSUMER AFFAIRS

### YOUR SAFE'S UNIQUE IDENTIFICATION NUMBERS

When contacting Consumer Affairs, you should be prepared to supply some important information that specifically identifies your safe. This information is extremely important to assuring prompt and accurate customer assistance.

It is strongly recommended that you identify and record the following information in the Safe Identification Record form located on page 10.

**MODEL NUMBER**

1

**SERIAL NUMBER**

2

**KEY NUMBER**

3

**Safe Identification Record**

Model Number \_\_\_\_\_ ← 1

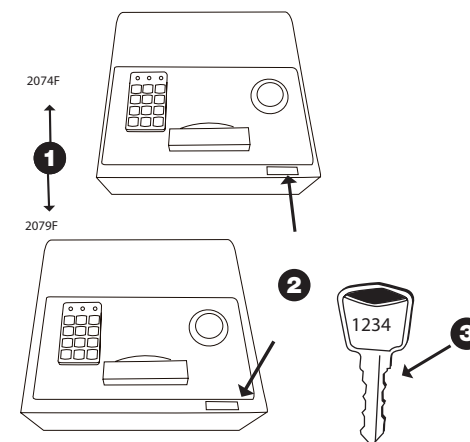
Serial Number \_\_\_\_\_ ← 2

Key Number \_\_\_\_\_ ← 3

Digital Passcode Record - Model 2074F, 2079F

Your Passcode must be at least 3 digits and no more than 8 digits followed by the letter A or B.

										A
										B



### IMPORTANT DO NOT REMOVE TAGS

*In case your safe becomes inoperable or you lose your keys, these identification numbers will be needed to correct the problem. It is recommended that the number tags remain in place on the safe. If removal is necessary, then they should be attached to the inside back cover of this manual. Store in a safe and secure place for future reference.*

**HOW TO OBTAIN WARRANTY SERVICE**

If service is required, do not return the product to your retailer. In order to obtain warranty service, contact Consumer Affairs at 1-800-323-9005, 7:30 a.m. – 5 p.m. Central Standard Time, Monday through Friday. To assist us in serving you, please have the model number, serial number and date of purchase available when calling.

**Please return item(s) with Customer Reference number marked on the outside of the box to the address listed below:**

**First Alert, Inc.  
Attn: Warranty Safe Returns  
23610 S Banning Blvd  
Carson, CA 90745**

**ORDERING REPLACEMENT KEYS**

If you lose the safe entry or Emergency Override keys or would like additional keys, you can purchase them from First Alert, Inc. You must supply the following information to assure accurate processing:

1. Name / Address / Telephone Number
2. Safe Model Number / Serial Number
3. Key Number (located on the key and on the Emergency Override Key Lock)
4. Notarized statement of ownership (a notary letter form can be printed off at [www.firstalert.com](http://www.firstalert.com))
5. Indicate number of keys requested

Please send all the information via fax at 630-851-7995 or mail First Alert, Inc., 3901 Liberty Street Road, Aurora, IL 60504-8122.

Checks or Money Orders are required for orders received by mail and should be made payable to First Alert. Contact our Consumer Affairs Department for costing information prior to ordering.

**Mail To: First Alert, Inc.**

**Attn: Consumer Affairs  
3901 Liberty Street Road  
Aurora, IL 60504-8122**

**SAFE IDENTIFICATION RECORD**

Model Number \_\_\_\_\_

Serial Number \_\_\_\_\_

Key Number \_\_\_\_\_

Digital Passcode Record \_\_\_\_\_

Your passcode must be at least three (3) digits and no more than eight (8) digits followed by the letter 'A' or 'B'.

